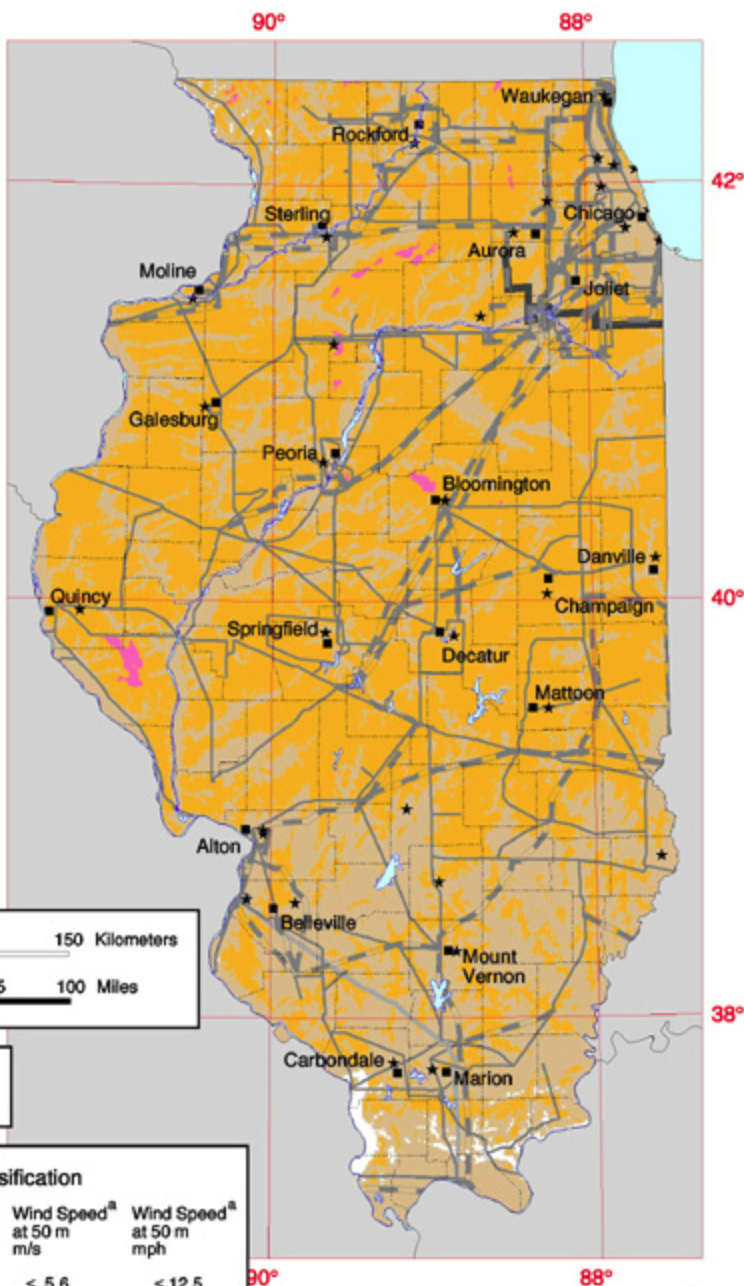


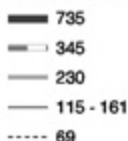
Illinois - Wind Resource Map



The productivity estimates apply only to open areas free of significant obstructions to the wind. Common obstructions include groves of trees and tall buildings. In obstructed areas the wind resource can be considerably reduced.

Transmission Line*

Voltage (kV)



*Source: RDI/FT Energy, Inc.

50 0 50 100 150 Kilometers

25 0 25 50 75 100 Miles

- ★ Meteorological Station with Wind Data
- City or Town

Wind Power Classification

Wind Power Class	Resource Potential	Wind Power Density at 50 m W/m^2	Wind Speed ^a at 50 m m/s	Wind Speed ^a at 50 m mph
1	Poor	< 200	< 5.6	< 12.5
2	Marginal	200 - 300	5.6 - 6.4	12.5 - 14.3
3	Fair	300 - 400	6.4 - 7.0	14.3 - 15.7
4	Good	400 - 500	7.0 - 7.5	15.7 - 16.8

^aWind speeds are based on a Weibull k value of 2.0



U.S. Department of Energy
National Renewable Energy Laboratory

25-JUN-2001 2.1.1